



VASSILY PRIMAKOV



KONSTANTIN SOUKHOVETSKI

July 8 - OPENING NIGHT

The Manchester Festival Orchestra, Ariel Rudiakov, conductor
Orchestral concert, featuring special guests, Vassily Primakov and Konstantin Soukhovetski, pianists

Beethoven - Overture to The Creatures of Prometheus, Op. 43
Poulenc - Concerto for two pianos in D Minor
Mendelssohn - Concerto in A Flat Major for two pianos

Join us for a pre-concert reception:

Conversation & Cocktails

with guest pianists, Vassily Primakov and Konstantin Soukhovetski, and conductor, Ariel Rudiakov. 6:00-7:15pm
\$50 per person



HEIDI RUBY-KUSHIOUS



PAUL KUSHIOUS

July 15 - Double the Pleasure

Featuring Heidi Ruby-Kushious and Jayn Rosenfeld, flutes; Joana Genova and Danwen Jiang, violins; and Paul Kushious and Ronald Feldman, cello; with Rip Jackson, harpsichord

Dvorak - ('bass') Quintet for strings No. 2 in G Major, Op.77
Vivaldi - Concerto for two cellos in G Minor
Bach - Brandenburg Concerto No. 4



AMADI AZIKIWE



DAVID DEVEAU

July 22 - A Major Concert!

Featuring Amadi Azikiwe, viola and David Deveau, piano

Loeffler - Ballade Carnavalesque
Mendelssohn - Quintet for strings in A Major, Op.18
Brahms - Quartet for piano and strings in A Major, Op. 26



BRIDGET KIBBEY

July 29 - French Delights

Special guest, Bridget Kibbey, harp (2009 Concert Artists Guild winner)

All-French program including works by Ravel, Caplet, Cras and Saint-Saens



PETER ERNST

August 5 - Fandango!

Special guest, Peter Ernst, guitar

Angulo - Paseos
Boccherini - Guitar Quintet No.4 'Fandango'
Beethoven - Trio for piano and strings in B flat Major, Op. 97 'Archduke'



ADAM NEIMAN

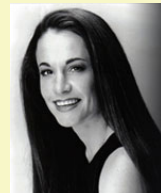


YEHUDA HANANI

August 12 - Chopin 200

Special guest Adam Neiman, piano and featuring Yehuda Hanani, cello

Franz Liszt - Transcendental Etudes:
No. 5 Feux-follets (Will-'o'-the Wisp) &
No. 8 Wilde Jagd (The Wild Hunt)
Chausson - Quartet for piano and strings in A Minor, Op. 30
Chopin - Sonata for cello and piano in G Minor, Op.65



CAREN LEVINE

August 19

Singers from the Metropolitan Opera's Lindemann Young Artists Development Program and National Council winners. Accompanied by pianist Caren Levine.

Young Artist Series July 5th through August 9th

Young Artists perform chamber music on six Monday evenings at 7:30 PM at the Riley Center for the Arts at Burr and Burton Academy.



The MMF's 36th Summer Series is made possible in part by the sponsorship of:

Chittenden Bank



Berkshire Bank



The Vermont Country Store



The Orvis Company



The Sanctuary Collection

2010 TICKET ORDER FORM

| No. of Tickets | Amount |
|--|---|
| July 8: Conversation & Cocktails with Vassily Primakov & Konstantin Soukhovetsky: \$50 ea. | |
| SUMMER SERIES CONCERTS 2010 Subscription (All 7 concerts): \$200 ea. | |
| Single Tickets | |
| July 8: <i>Opening Night</i> - Orchestral Concert: \$40 each | |
| July 15: <i>Double the Pleasure</i> : \$30 each | |
| July 22: <i>A Major Concert!</i> : \$30 each | |
| July 29: <i>French Delights</i> : \$30 each | |
| August 5: <i>Fandango</i> : \$30 each | |
| August 12: <i>Chopin 200</i> : \$30 each | |
| August 19: <i>Metropolitan Opera Showcase</i> : \$40 each | |
| Young Artists Series (Tickets: Adults - \$10 each; Students age 6 - 22 \$5 each) | |
| July 5 | |
| July 12 | Chamber Music From Beethoven to Bartok |
| July 19 | |
| July 26 | |
| August 2 | |
| August 9 | |
| Master Class (Tickets: Adults - \$10 each; Students age 6 - 22 \$5 each) | |
| July 14 with Renee Jolles, violin - First Congregational Church, 3:00PM | |

SUMMER SERIES CONCERTS are held on Thursday evenings at 7:30 PM, in the Arkell Pavilion of the Southern Vermont Arts Center. All seating is reserved.

YOUNG ARTISTS CONCERTS are held on Monday evenings at 7:30 PM, at the Riley Center for the Arts on the campus of Burr & Burton Academy. All seating is general.

MASTER CLASSES Wednesday, July 14, 3-5PM, First Congregational Church, Manchester with Renee Jolles, violin.

Tickets to individual concerts are subject to availability. Single ticket orders will be filled after May 1, 2010.

Name _____
 Address _____
 City _____ State _____ Zip _____
 Email _____
 Payment Visa Mastercard Check
 Please make checks payable to Manchester Music Festival
 Card Number _____
 Expiration Date _____
 Signature _____
 All orders are final. No refunds.
 Send payments to: **Manchester Music Festival**
 PO Box 33, Manchester, VT 05254
 Order Online at: www.mmfv.org E-mail: info@www.mmfv.org
 For information: (802) 362-1956 / (800) 639-5868

| |
|----------------------|
| TOTAL AMOUNT: |
|----------------------|